



## Sweet Briar, 21 The Borough

Crondall, Farnham, GU10 5NT

A charming 2 double bedroom Grade II listed character end of terrace cottage situated in the heart of Crondall village.

**Price Guide £449,000**

# Sweet Briar, 21 The Borough

Crondall, Farnham, GU10 5NT



- Village centre location
- Dining room
- 2 double bedrooms
- No onward chain
- Grade II listed end of terrace character cottage
- Kitchen
- Garden with garden store
- Sitting room with fireplace
- Shower room
- Close to village shop, school and next to the Plume of Feathers Inn



Directions

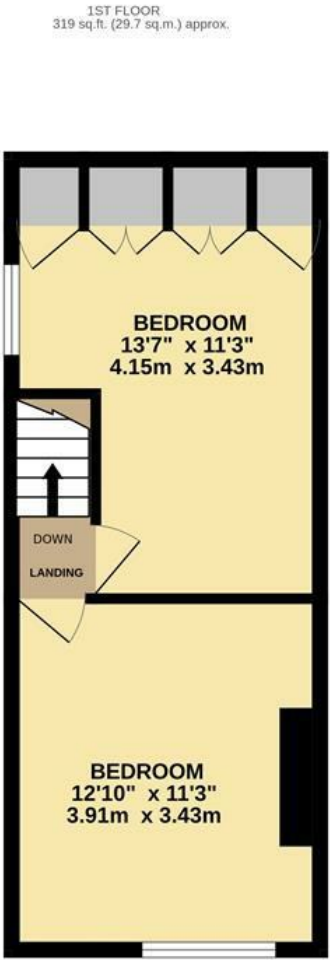
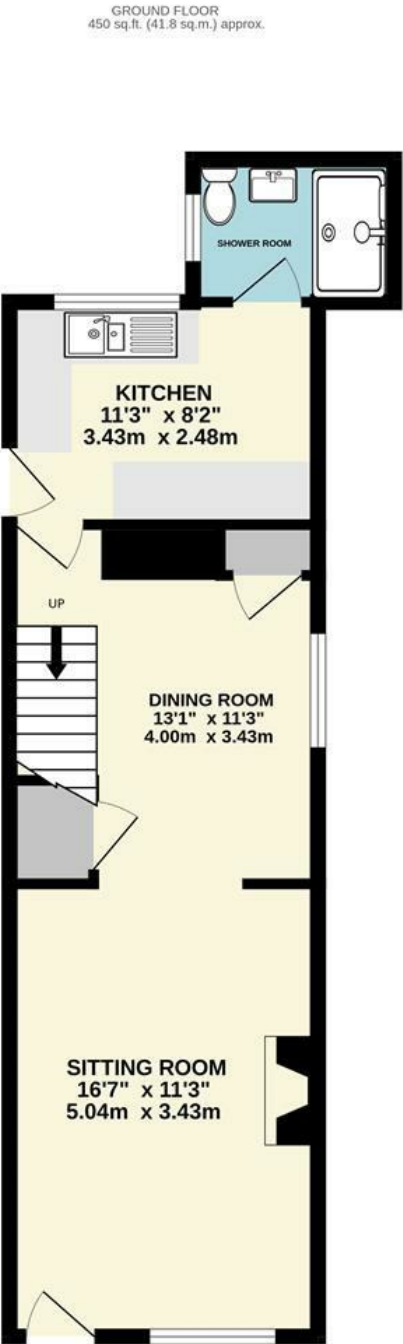








Floor Plan



TOTAL FLOOR AREA : 769 sq.ft. (71.5 sq.m.) approx.

Whilst every attempt has been made to ensure the accuracy of the floorplan contained here, measurements of doors, windows, rooms and any other items are approximate and no responsibility is taken for any error, omission or mis-statement. This plan is for illustrative purposes only and should be used as such by any prospective purchaser. The services, systems and appliances shown have not been tested and no guarantee as to their operability or efficiency can be given.

Made with Metropix ©2025

These particulars, whilst believed to be accurate are set out as a general outline only for guidance and do not constitute any part of an offer or contract. Intending purchasers should not rely on them as statements of representation of fact, but must satisfy themselves by inspection or otherwise as to their accuracy. No person in this firms employment has the authority to make or give any representation or warranty in respect of the property.

| Energy Efficiency Rating                    |                         |           | Environmental Impact (CO <sub>2</sub> ) Rating                  |                         |           |
|---|-------------------------|-----------|---|-------------------------|-----------|
|   | Current                 | Potential |   | Current                 | Potential |
| Very energy efficient - lower running costs |                         |           | Very environmentally friendly - lower CO <sub>2</sub> emissions |                         |           |
| (92 plus) <b>A</b>                          |                         |           | (92 plus) <b>A</b>  |                         |           |
| (81-91) <b>B</b>                            |                         |           | (81-91) <b>B</b>  |                         |           |
| (69-80) <b>C</b>                            |                         |           | (69-80) <b>C</b>  |                         |           |
| (55-68) <b>D</b>                            |                         |           | (55-68) <b>D</b>  |                         |           |
| (39-54) <b>E</b>                            |                         |           | (39-54) <b>E</b>  |                         |           |
| (21-38) <b>F</b>                            |                         |           | (21-38) <b>F</b>  |                         |           |
| (1-20) <b>G</b>                             |                         |           | (1-20) <b>G</b>   |                         |           |
| Not energy efficient - higher running costs |                         |           | Not environmentally friendly - higher CO <sub>2</sub> emissions |                         |           |
| England & Wales                             | EU Directive 2002/91/EC |           | England & Wales   | EU Directive 2002/91/EC |           |